

## How to perform firmware upgrade on Billion 7800 Series router

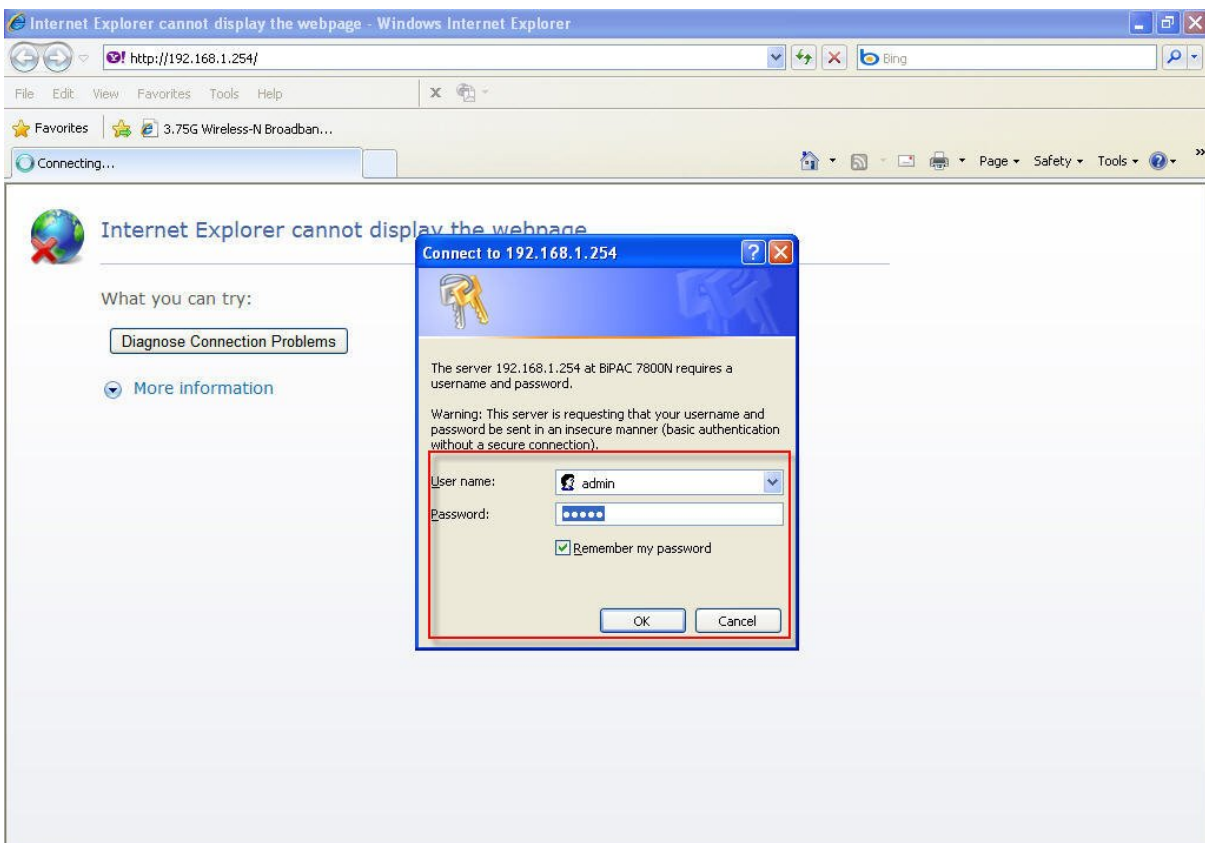
1) Please visit our download section on our UK website at:

<http://www.billion.uk.com/esupport>

2) Navigate and find the correct router and download the latest firmware. The firmware file will be in WinZip format, so please download it to a memorable location on your computer e.g. your desktop. Once the firmware finished download you will then need to unzip it using WinZip. You can get WinZip free here:

<http://www.winzip.com/downwzeval.htm>. The unzipped firmware should have the .AFW file extension. E.g. UK\_Billion\_7800Nv106a.AFW.

3) Now login to you router's WEB GUI by typing in its IP address on your browser. E.g. the default IP address is <http://192.168.1.254>



4) Then enter the router's login username and password. E.g. Default Username/ Password = admin / admin.

5) Once you have successfully login to the router, please follow the screenshots.

6) Click on “Advanced”

**BILLION** Dual WAN ADSL2+ Firewall Router Powering communications with Security

Basic

- Advanced
- Status
- Quick Start
- WAN
- WLAN

**Status**

Device Information

Model Name	BIPAC 7800N
System Up-Time	3 min(s)
Hardware Version	Annex A
Software Version	1.05

Physical Port Status

Ethernet	✓
EWAN	✗
ADSL	✗
Wireless	✓

WAN

Port	Protocol VPI/VCI	Operation	Connection	IP Address	Netmask	Gateway	Primary DNS
ADSL	PPPoA 0/38		Link Down				

Save Config Restart Logout

Copyright @ Billion Electric Co., Ltd. All rights reserved.

7) Click on “Configuration”

**BILLION** Dual WAN ADSL2+ Firewall Router Powering communications with Security

Advanced

- Basic
- Status
- Quick Start
- Configuration

**Status**

Device Information

Model Name	BIPAC 7800N
Host Name	home.gateway
System Up-Time	4 min(s)
Current Time	Sat Jan 1 00:04:02 2000
Hardware Version	Annex A
Software Version	1.05
MAC Address	00:04:ed:d2:4d:37

Physical Port Status

Ethernet	✓
EWAN	✗
ADSL	✗
Wireless	✓

WAN

Port	Protocol VPI/VCI	Operation	Connection	IP Address	Netmask	Gateway	Primary DNS
ADSL	PPPoA 0/38		Link Down				

Save Config Restart Logout

Copyright @ Billion Electric Co., Ltd. All rights reserved.

8) Click on “System”

The screenshot shows the configuration interface for a BILLION Dual WAN ADSL2+ Firewall Router. The left sidebar menu is expanded to the 'System' option, which is highlighted with a red box. The main content area is titled 'Configuration' and shows the 'Ethernet' section. The parameters are as follows:

Parameters	
IP Address	192.168.1.254
Netmask	255.255.255.0
RIP	Disable

Buttons for 'Apply' and 'Cancel' are visible at the bottom of the configuration section. At the bottom of the page, there are buttons for 'Save Config', 'Restart', and 'Logout', and a copyright notice: 'Copyright @ Billion Electric Co., Ltd. All rights reserved.'

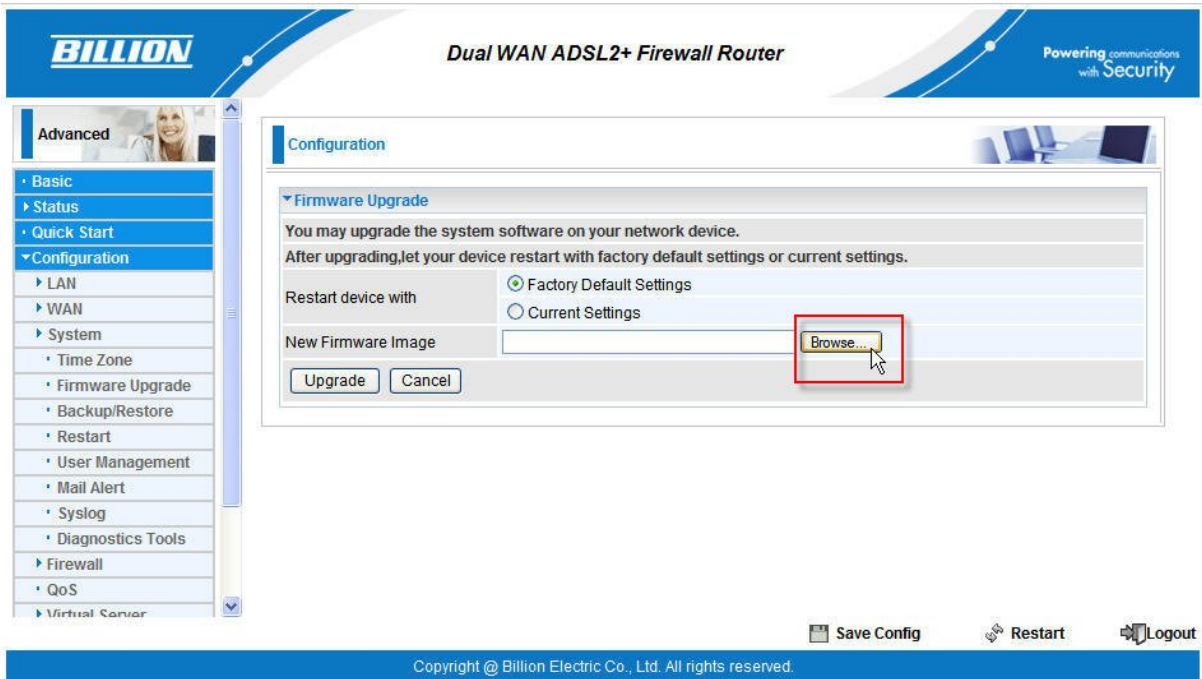
9) Click on “Firmware Upgrade”

The screenshot shows the configuration interface for a BILLION Dual WAN ADSL2+ Firewall Router. The left sidebar menu is expanded to the 'Firmware Upgrade' option, which is highlighted with a red box. The main content area is titled 'Configuration' and shows the 'Time Zone' section. The parameters are as follows:

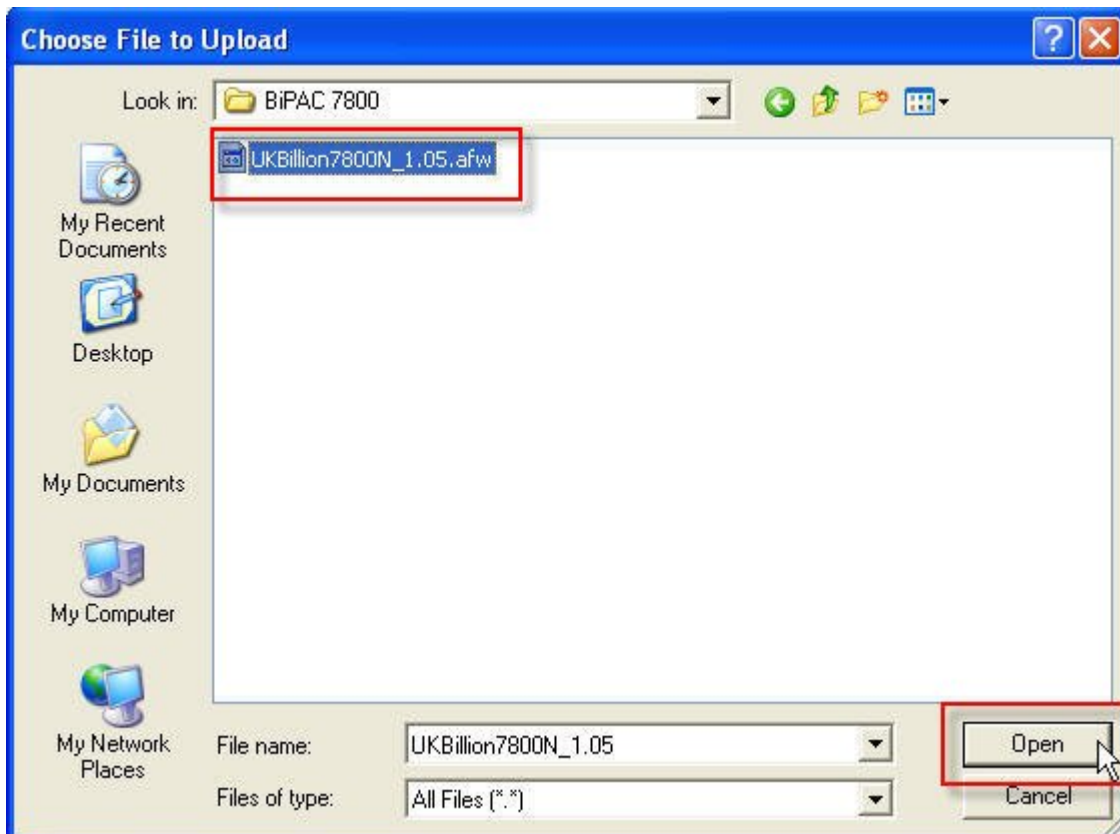
Parameters	
Time Zone	<input checked="" type="radio"/> Enable <input type="radio"/> Disable
Local Time Zone (+-GMT Time)	(GMT) Greenwich Mean Time
SNTP Server IP Address	192.43.244.18 128.138.140.44 129.6.15.29 216.218.192.202
Daylight Saving	<input checked="" type="checkbox"/> Automatic
Resync Period	1440 minutes

Below the parameters is a world map. At the bottom of the page, there are buttons for 'Save Config', 'Restart', and 'Logout', and a copyright notice: 'Copyright @ Billion Electric Co., Ltd. All rights reserved.'

10) Click on “Browse” and browse to the folder where your firmware file was unzipped.



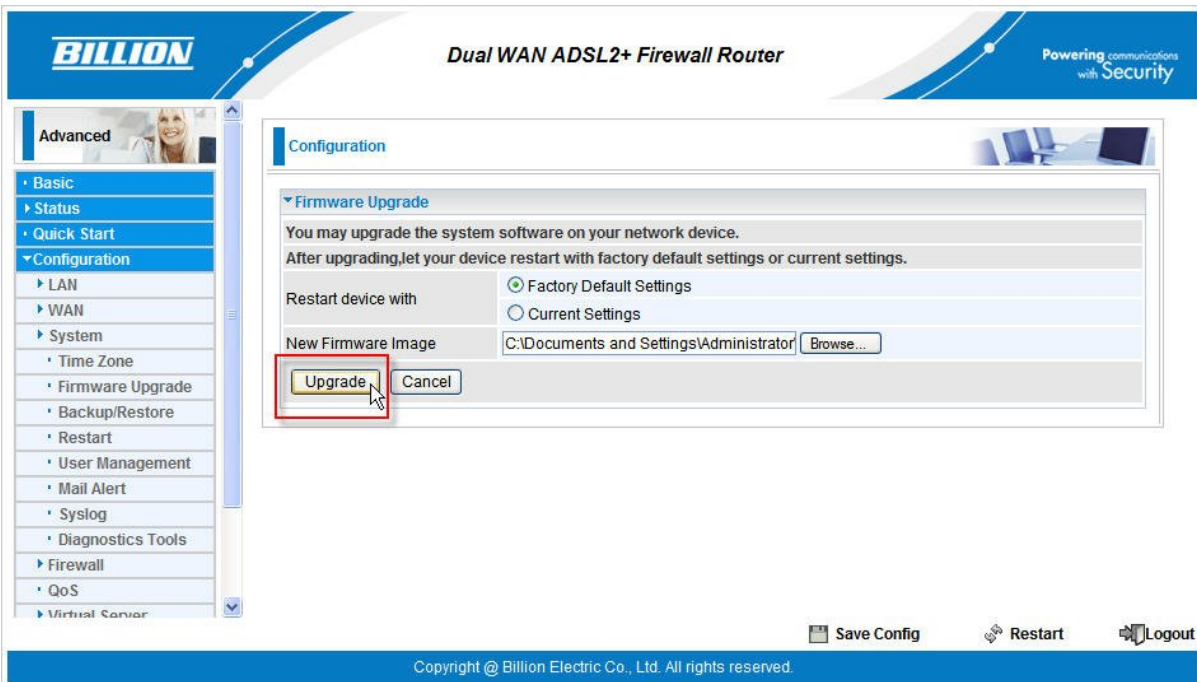
11) Click and select the firmware file then click on “Open”



12) For “Restart the router with”, select “Current settings” if you have already configure your router. If you select “Factory Default Settings” all existing settings on the router will be lost e.g. you ADSL user login details, wireless settings...etc. There are occasions that a factory reset is recommended but generally reset with current settings should be sufficient.



13) Click on “Upgrade” to proceed with the firmware upgrade.



14) The process could take up to 5 minutes. A status bar will show up on the screen and **PLEASE DO NOT SWITCH OFF, DISCONNECT or DISCORRUPT THE ROUTER AT ANY TIME DURING FIRMWARE UPGRADE** as it will cause damage to the router.

**BILLION** Dual WAN ADSL2+ Firewall Router Powering communications with Security

Advanced

- Basic
- Status
- Quick Start
- Configuration
  - LAN
  - WAN
  - System
    - Time Zone
    - Firmware Upgrade
    - Backup/Restore
    - Restart
    - User Management
    - Mail Alert
    - Syslog
    - Diagnostics Tools
  - Firewall
  - QoS
  - Virtual Server

**Firmware Upgrade**

firmware upgrade progress

do not switch off device during flash update

total :  14%

Save Config Restart Logout

Copyright @ Billion Electric Co., Ltd. All rights reserved.

15) Once the status bar reaches 100% then the firmware upgrade process is completed and you should be redirected back to the router's homepage.

**BILLION** Dual WAN ADSL2+ Firewall Router Powering communications with Security

Basic

- Advanced
- Status
- Quick Start
- WAN
- WLAN

**Status**

Device Information

Model Name	BIPAC 7800N
System Up-Time	1 min(s)
Hardware Version	Annex A
Software Version	1.06a

Physical Port Status

Ethernet	✓
EWAN	✗
ADSL	✗
Wireless	✓

WAN

Port	Protocol VPI/VCI	Operation	Connection	IP Address	Netmask	Gateway	Primary DNS
ADSL	PPPoA 0/38		Link Down				

Save Config Restart Logout

Copyright @ Billion Electric Co., Ltd. All rights reserved.